




CHROME BOPP ART SET UP EXAMPLE

ART LAYER	WHITE INK LAYER	FINISHED CHROME BOPP EXAMPLE
 <p>— = Die / Trim</p> <p>The Art Layer will look like the intended label, but without the metallic effect.</p>	 <p>— = Die / Trim</p> <p>■ = White Ink Areas (100% Magenta)</p> <p>□ = Metallic Areas (on-screen-white)</p>	 <p>■ = Chrome BOPP Material</p> <p>Metallic colors are achieved if no white ink is printed in the intended areas.</p> <p>Non-metallic colors are achieved by printing white ink in the intended areas.</p>
<p>NOTE: If an area is on-screen-white in the art layer and the white ink layer, that area would print as the Chrome BOPP material. An example is the "CHROME TEXT!" shown above</p>		

STEP 1 - Artwork

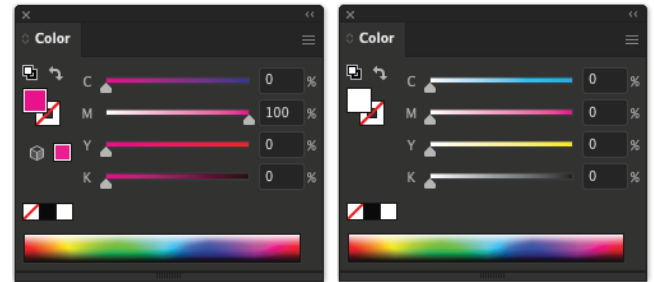
Create the art on a layer named "ART". This art will look like the intended label, but without the metallic effect.

STEP 2 - New WHITE INK layer

Copy the "ART" layer and rename the copied layer "WHITE INK". You can then turn off or lock the original "ART" layer. This will allow you to re-color the graphic elements on the "WHITE INK" layer without affecting the original art.

STEP 3 - White ink re-color

Set the areas that are to be non-metallic and metallic by changing the graphics in the "WHITE INK" layer to be either 100% magenta or on-screen-white.



■ = Non Metallic Areas (White ink)

□ = Metallic Areas (Knockouts)

CHROME BOPP PRINTING EXAMPLE

ART LAYER - CMYK Inks (Printed Second)

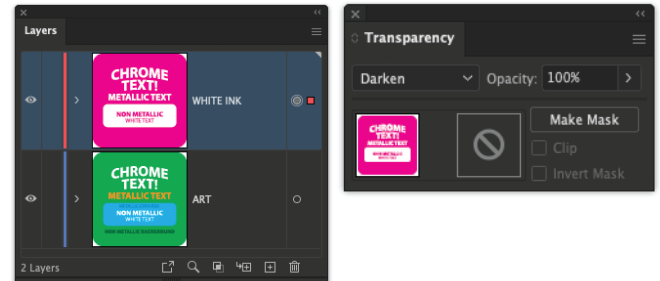
WHITE INK LAYER (Printed First)

Chrome BOPP Material

* YELLOW ADDED TO SHOW KNOCKOUTS (NON-PRINTING AREAS)

STEP 4 - Preview Finished layers

Move the "WHITE INK" layer on-top of the "ART" layer and set the "WHITE INK" layer to a "Darken" transparency to show the overlay. This will show any mis-alignment issues.



CLEAR BOPP ART SET UP EXAMPLE

ART LAYER	WHITE INK LAYER	FINISHED CLEAR BOPP EXAMPLE
<p>— = Die / Trim</p> <p>The Art Layer will look like the intended label, but without the transparent effect.</p>	<p>— = Die / Trim</p> <p>■ = White Ink Areas (100% Magenta)</p> <p>□ = Clear Areas (on-screen-white)</p>	<p>■ = Clear BOPP Material</p> <p>Opaque colors are achieved if white ink is printed in the intended areas.</p> <p>Translucent colors are achieved by printing no white ink in the intended areas.</p>

NOTE: If an area is on-screen-white in the art layer and the white ink layer, that area would print as the Clear BOPP material. An example is the "CLEAR TEXT!" shown above

STEP 1 - Artwork

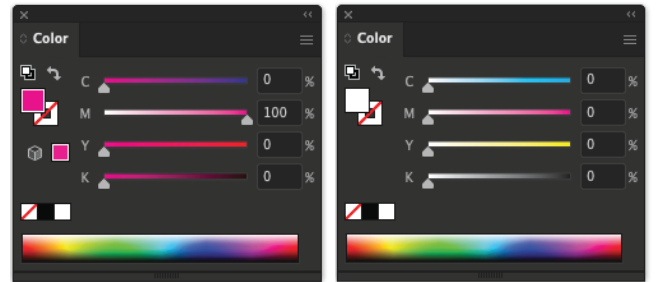
Create the art on a layer named "ART". This art will look like the intended label, but without the clear effect.

STEP 2 - New WHITE INK layer

Copy the "ART" layer and rename the copied layer "WHITE INK". You can then turn off or lock the original "ART" layer. This will allow you to re-color the graphic elements on the "WHITE INK" layer without affecting the original art.

STEP 3 - White ink re-color

Set the areas that are to be opaque/white or clear/translucent by changing the graphics in the "WHITE INK" layer to be either 100% magenta or on-screen-white.



■ = Opaque Areas (White ink)

□ = Clear/Translucent Areas (Knockouts)

CLEAR BOPP PRINTING EXAMPLE

ART LAYER - CMYK Inks (Printed Second)

WHITE INK LAYER (Printed First)

Clear BOPP Material

* YELLOW ADDED TO SHOW KNOCKOUTS (NON-PRINTING AREAS)

STEP 4 - Preview Finished layers

Move the "WHITE INK" layer on-top of the "ART" layer and set the "WHITE INK" layer to a "Darken" transparency to show the overlay. This will show any mis-alignment issues.

